



Contact: Danielle Dascalos 720-837-3845

ddascalos@comcast.net

www.mountainploverfestival.com or www.lincolncountytourism.com

MAKE RESERVATIONS NOW FOR THE 9th ANNUAL MOUNTAIN PLOVER FESTIVAL IN KARVAL, COLORADO -- APRIL 24-26, 2015

Reservations are now being accepted for the 9th annual Mountain Plover Festival, hosted by the Karval, Community Alliance, which takes place Friday and Saturday, April 24 and 25, 2015 with a final country breakfast the morning of April 26 in Karval, Colorado.

Birders, nature lovers and families will enjoy unique bird watching on ordinarily inaccessible private land, wildlife viewing, entertainment, history and lots of great food, including an authentic Saturday night Chuck Wagon dinner.

The Mountain Plover is a bird that begins arriving on Colorado's central plains in early April. Plovers find the short grass prairie and fallow fields in the area to be excellent habitat and Karval, Colorado is one of the largest nesting grounds for this elusive bird in North America. Mountain Plovers migrate over the Rocky Mountains from California, hence the name "mountain," and stay in the area usually through September.

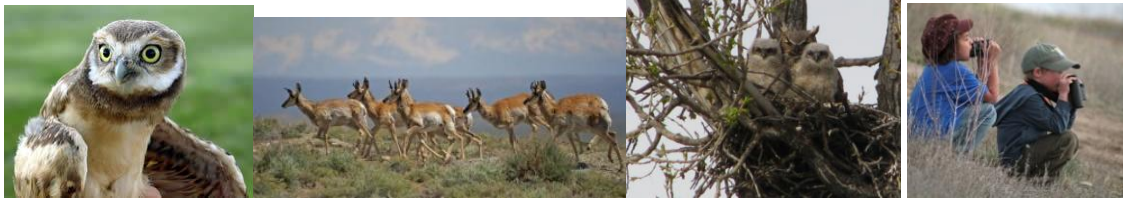
Birders visit this area from all over the world to spot a Mountain Plover. Often referred to as the "ghost of the prairie," plovers blend in with the environment. The Mountain Plover Festival is a terrific time to travel the area in groups searching for nests that are tended by both female and male plovers. Third generation ranchers, the sons and daughters of homesteaders, lead day and evening tours, on public and private land and through the spring hunting grounds of Native Americans, sharing stories and visiting local historic sites including a prairie school house.

"We "bring the bird lovers to the bird," Karval Community Alliance President Jeff Thornton said. "Along with bird watching, our guests get the chance to mingle with farmers and ranchers who have lived on this land for generations, eat home style food including a chuck wagon dinner with authentic western entertainment and learn about conservation practices and the history of this unique part of Colorado."

The Rocky Mountain Bird Observatory has been working closely with the Karval Community Alliance since the start of the Mountain Plover Festival in 2007. Landowners and biologists are working together to study and preserve the nesting grounds of this elusive species.

The Karval Plover Festival is a unique opportunity to explore the human and natural communities of Colorado's Eastern Plains which are often over-looked but every bit as fascinating as the rest of the state and can be at this time of year full of birding surprises the Rocky Mountain Bird Observatory added.

-more-



An array of birds can be seen during the festival including Mountain Plover, Burrowing Owls, Great Horned Owls, Golden Eagles, Great Blue Herons, Eastern Screech Owls, Ruby Crowned Kinglets, Bluebirds and Green-Tailed Towhee. These rolling grasslands and treeless horizons are also home to coyotes, badgers, swift foxes, pronghorns, cattle, antelope and deer.

The 2015 Mountain Plover Festival Includes Country Hospitality With All Meals Included.

(This festival fills quickly. Advance reservations are required.)



2015 Price Structure and Registration Information

Registrations will be accepted on a space available basis only!

To register online [Click Here](#) or print a registration form [here](#). Mail completed forms to Mountain Plover Festival Registration, PO Box 37 Karval Colorado 80823 or email alliance@karval.org

- Full package:\$200.00 registration fee includes all events and activities. Or, bring a friend and both attend for \$350.00!! (Housing not included)
- [Friday Evening Events](#) only: \$50 or 2 people for \$80
- [Saturday Events](#) only:\$150 or 2 people for \$270
- Sunday--Breakfast for full package and Saturday registrants will be available at the Karval Community Building from 7am to 9am
- Printable [Schedule](#)

Guests who wish to visit for the weekend can inquire about home stays with local ranchers and farmers, electric hookups for motors homes and camping sites. The nearest lodging is in Limon or Hugo, Colorado. For more lodging information contact; Connie Stone: 719-446-5456 or email connie.g.stone@usps.gov

For complete information and including a map with driving instructions visit www.mountainploverfestival.com or www.lincolncountytourism.com

Get the latest updates and view photos of the Mountain Plover Festival on

